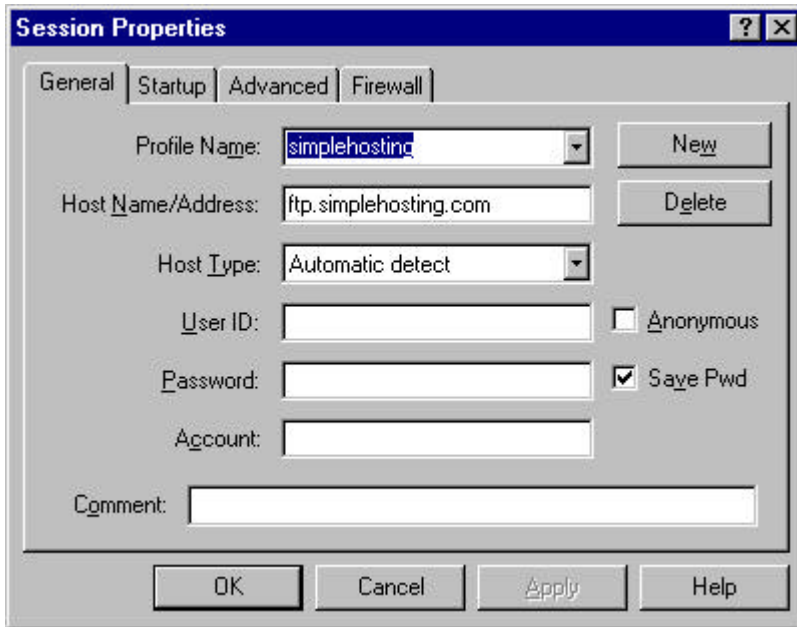


WS FTP95 LE

To Install the WS FTP95 LE program, double click on the installer icon. A window will appear that asks you what your intended purpose for using the program is. Select "Other". A new window will appear asking your use again. Select "From Home" and "For personal use". Select the directory where you would like to have the program installed.

Once Installation is complete, launch the program. On start up, the program will ask you to create a new profile. You should fill in the fields with the following information, putting your own User ID (User Name) and Password in the fields provided.



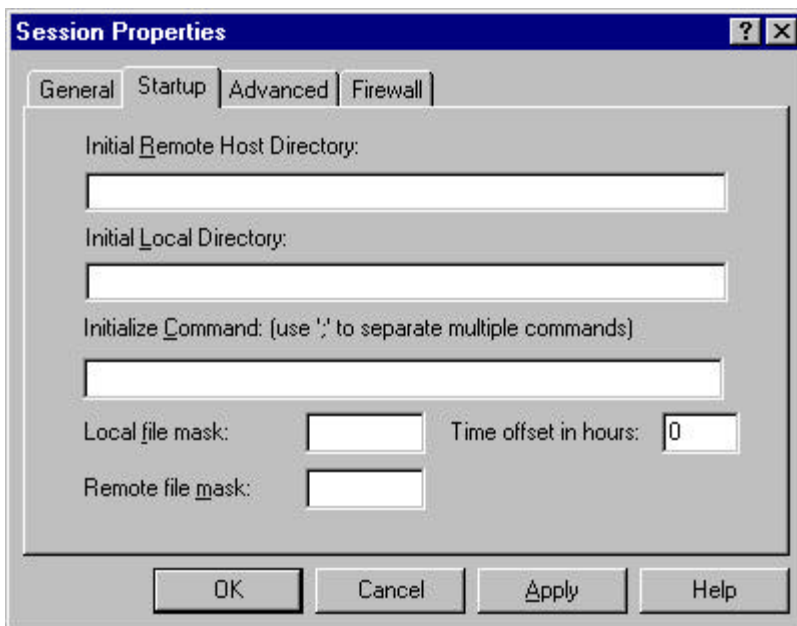
The screenshot shows the 'Session Properties' dialog box with the 'General' tab selected. The fields are filled with the following information:

- Profile Name: simplehosting
- Host Name/Address: ftp.simplehosting.com
- Host Type: Automatic detect
- User ID: (empty)
- Password: (empty)
- Account: (empty)
- Comment: (empty)

Buttons: New, Delete, OK, Cancel, Apply, Help. Checkboxes: Anonymous (unchecked), Save Pwd (checked).

The fields on the setup screen "General" tab be configured like this with your own User ID and Password in the spaces provided.

Next click on the "Startup" tab and delete all information in the fields.



The screenshot shows the 'Session Properties' dialog box with the 'Startup' tab selected. All fields are blank:

- Initial Remote Host Directory: (empty)
- Initial Local Directory: (empty)
- Initialize Command: (empty)
- Local file mask: (empty)
- Remote file mask: (empty)
- Time offset in hours: 0

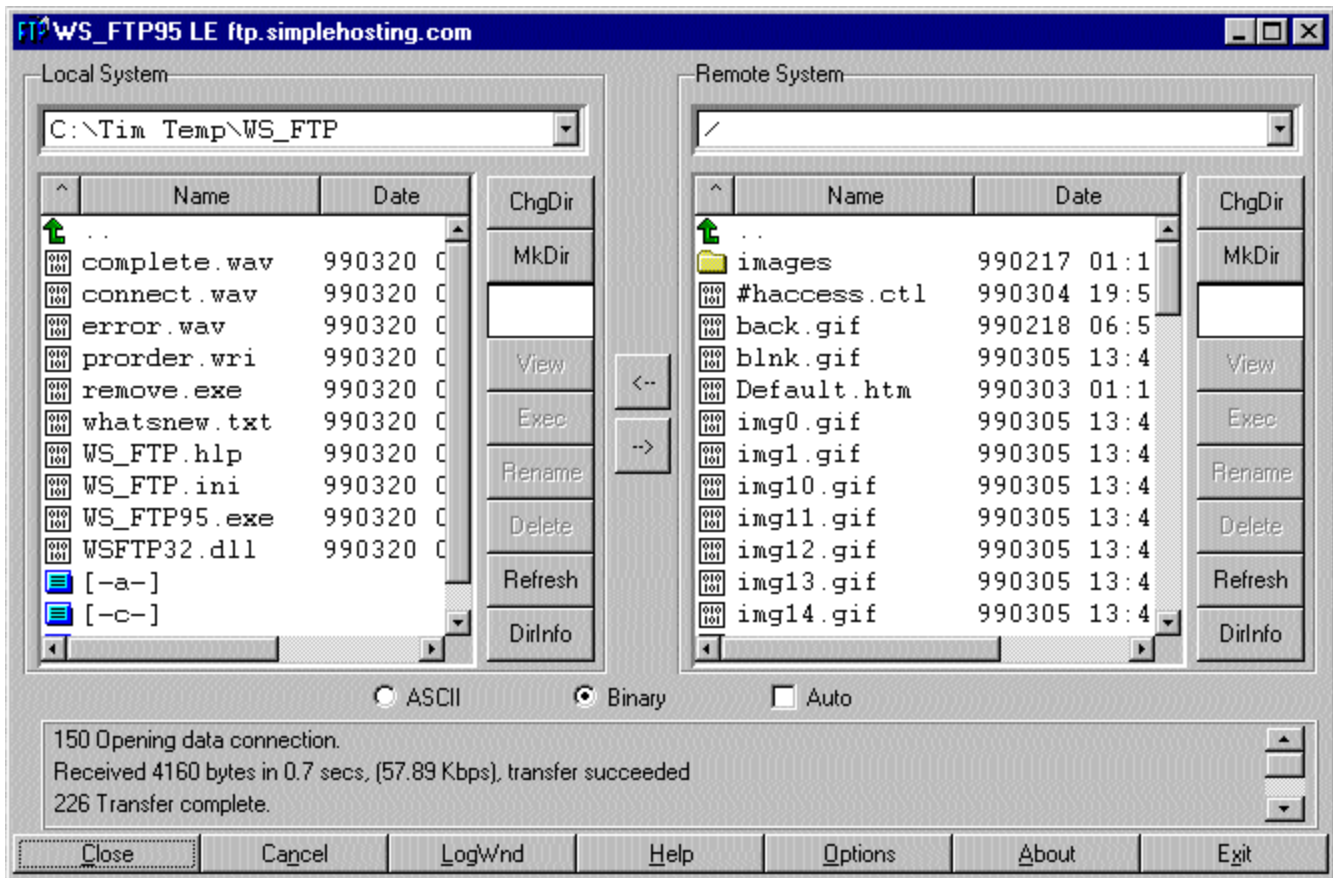
Buttons: OK, Cancel, Apply, Help.

The fields on the setup screen "Startup" tab should look like this. All fields should appear blank.

When finished click "OK". You do not need to do any configuring for the "Advanced" or "Firewall" tabs

A new window appears that has 2 file lists. The one on the left is for your own computer, the one on the right is for the web server. Use the list on the left to browse through your hard drive until you have located the directory that contains all of your web files. You can highlight a file in either list and use the arrows in the middle to move files from your computer to the webserver, or from the webserver to your computer.

You can also create a new subdirectory on the webserver by clicking on the “MKDir” button.



You may need to refresh your file list on the web server after you upload files to see them in the file list.

Happy FTPing!